

## TECHNICAL DATA SHEET

# Biotin Anti-Mouse CD62L (L-Selectin) (MEL-14)

Catalog Number: 30-0621

## PRODUCT INFORMATION

**Contents:** Biotin Anti-Mouse CD62L (L-Selectin) (MEL-14)

**Isotype:** Rat IgG2a, kappa

**Concentration:** 0.5 mg/mL

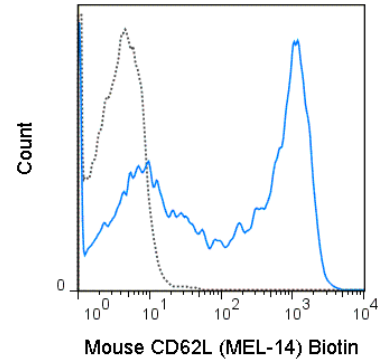
**Clone:** MEL-14

**Reactivity:** Mouse

**Use By:** 12 months from date of receipt

**Storage Conditions:** 2-8°C

**Formulation:** 10 mM NaH<sub>2</sub>PO<sub>4</sub>, 150 mM NaCl, 0.09% NaN<sub>3</sub>, pH7.2



C57Bl/6 splenocytes were stained with 0.125 ug Biotin Anti-Mouse CD62L (30-0621) (solid line) or 0.125 ug Biotin Rat IgG2a isotype control (dashed line), followed by Streptavidin PE.

## DESCRIPTION

The MEL-14 antibody is specific for mouse CD62L, also known as L-Selectin, a cell adhesion molecule which facilitates lymphocyte "rolling" on activated vascular endothelium and homing to high endothelial venules (HEV) as immune cells transmigrate from blood into peripheral tissues. L-Selectin is a member of a family of Selectin molecules which act together with the integrin family of adhesion molecules to mediate leukocyte-endothelial interactions. L-Selectin is characteristically expressed by neutrophils, and is also found on B cells, monocytes, granulocytes, and at varying levels on naive, effector and memory T cells. It is rapidly shed upon cell activation, releasing into the circulation a soluble form whose biological role is of particular interest in cancer biology research. The MEL-14 antibody may be used as a phenotypic marker for CD62L expression on a variety of immune cell types. Please note that CD62L (L-Selectin) itself is also referred to as MEL-14 in the literature.

## PREPARATION & STORAGE

This monoclonal antibody was purified from tissue culture supernatant via affinity chromatography. The purified antibody was conjugated under optimal conditions, with unreacted biotin removed from the preparation. It is recommended to store the product undiluted at 4°C, and protected from prolonged exposure to light. Do not freeze.

## APPLICATION NOTES

This antibody preparation has been quality-tested for flow cytometry using mouse spleen cells, or an appropriate cell type (where indicated). Please refer to the figure legend for the optimal concentration used to stain the tissue shown. We recommend titrating the antibody under your specific conditions to determine the optimal concentration of antibody needed in your experimental system. This antibody preparation has been quality-tested for flow cytometry using mouse spleen cells, or an appropriate cell type (where indicated). Please refer to the figure legend for the optimal concentration used to stain the tissue shown. We recommend titrating the antibody under your specific conditions to determine the optimal concentration of antibody needed in your experimental system.

## REFERENCES

Lee L-F, Logronio K, Tu GH, Zhai W, Ni I, Mei L, Dilley J, Yu J, et al. 2012. Proc. Natl. Acad. Sci. 10.1073. (Flow cytometry). Harp JR, Gilchrist MA, and Onami TM. 2010. J. Immunol. 185:5751-5761. (in vivo blocking) Furukawa Y, Umemoto E, Jang MH, Tohya K, Miyasaka M, and Hirata T. 2008. J. Biol. Chem. 283: 12112-12119. (Immunoelectron microscopy) Li Y, Brazzell J, Herrera A, and Walcheck B. 2006. 108: 2275-2279. (Immunoprecipitation) Ochando JC, Yopp AC, Yng Y, Garin A, Li Y, Boros P, Llodra J, Ding Y, Lira SA, Krieger NR, and Bromberg JS. 2005. J. Immunol. 174: 6993-7005. (in vivo blocking, Flow cytometry) Zhao L-C, Shey M, Farnsworth M, and Dailey MO. 2001. J. Biol. Chem. 276: 30631-30640. (Immunoprecipitation) Suzuki A, Andrew DP, Gonzalo JA, Fukumoto M, Spellberg J, Hashiyama M, Takimoto H, Gerwin N, Webb I, Molineux G, Amakawa R, Tada Y, Wakeham A, Brown J, McNiece I, Ley K, Butcher EC, Suda T, Gutierrez-Ramos JC, and Mak TK. 1996. Blood. 87:3550-3562. (Stamper-Woodruff assay; in vivo blocking) Reichert RA, Jerabek L, Gallatin WM, Butcher EC, and Weissman IL. 1986. 136(10): 3535-3542. (Immunohistochemistry)

Tonbo Biosciences tests all antibodies by flow cytometry. Citations are provided as a resource for additional applications that have not been validated by Tonbo Biosciences. Please choose the appropriate format for each application and consult Materials and Methods sections for additional details about the use of any product in these publications.

For Research Use Only.

Not for use in diagnostic or therapeutic procedures. Not for resale. Not for distribution without written consent. Tonbo Biosciences will not be held responsible for patent infringement or other violations that may occur with the use of our products. Tonbo Biosciences, Tonbo Biosciences Logo and all other trademarks are the property of Tonbo Biotechnologies Corporation. © 2013 Tonbo Biosciences.