

TECHNICAL DATA SHEET

FITC Anti-Human CD2 (RPA-2.10)

Catalog Number: 35-0029

PRODUCT INFORMATION

Contents: FITC Anti-Human CD2 (RPA-2.10)

Isotype: Mouse IgG1, kappa

Concentration: 5 µL (0.25 µg)/test

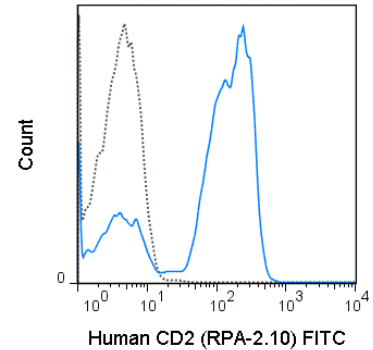
Clone: RPA-2.10

Reactivity: Human

Use By: 12 months from date of receipt

Storage Conditions: 2-8°C protected from light

Formulation: 10 mM NaH₂PO₄, 150 mM NaCl, 0.09% NaN₃, 0.1% gelatin, pH7.2



Human peripheral blood lymphocytes were stained with 5 µL (0.25 µg) FITC Anti-Human CD2 (35-0029) (solid line) or 0.25 µg FITC Mouse IgG1 isotype control (dashed line).

DESCRIPTION

The RPA-2.10 antibody reacts with human CD2, an approximately 50 kDa glycoprotein, and a member of the Ig superfamily. CD2, also known as LFA-2, is a receptor for CD58 in the human and is expressed on the cell surface of 80-90% of human peripheral blood lymphocytes, a subset of NK cells, and all mature T cells. CD2 mediates lymphocyte adhesion and is involved in T cell activation. RPA-2.10 is reported to block mixed lymphocyte reaction. Please choose the appropriate format for each application.

PREPARATION & STORAGE

This monoclonal antibody was purified from tissue culture supernatant via affinity chromatography. The purified antibody was conjugated under optimal conditions, with unreacted dye removed from the preparation. It is recommended to store the product undiluted at 4°C, and protected from prolonged exposure to light. Do not freeze.

APPLICATION NOTES

This antibody preparation has been pre-titrated and quality-tested for flow cytometry using an appropriate cell type. The antibody has been diluted for use at 5 µL per test, defined as the amount of antibody that will stain a cell sample in a final volume of approximately 100 µL. The number of cells within a sample should be determined empirically, but typically ranges between 1x10⁵ to 1x10⁸ cells.

REFERENCES

Knapp W, Dorken B, et al. eds. 1989. Leucocyte Typing IV: White Cell Differentiation Antigens. Oxford University Press. New York.
 Aversa GG, Bishop GA, Suranyi MG and Hall BM. 1987. Transplant Proc. 19: 277-278.
 Hahn WC, Burakoff SJ, Bierer BE. 1993. J Immunol. 150(7):2607-2619.
 Xu H, Elster EA, Blair PJ, Burkly LC, Tadaki DK, Harlan DM and Kirk AD. 2003. Am J Transplant. 3: 1350-1354. (Immunohistochemistry – frozen tissue)
 Kim EO, Kim TJ, Kim N, Kim ST, Kumar V and Lee KM. 2010. J Biol Chem. 285: 41755-41764. (in vitro blocking)
 Scherthaner GH, Jordan JH, Ghannadan M, Agis H, Bevec D, Nunez R, Escribano L, Majdic O, Willheim M, Worda C, Printz D, Fritsch G, Lechner K and Valent P. 2001. Blood. 98(13): 3784-3792. (Flow Cytometry)
 Herodin F, Thullier P, Garin D and Drouet M. 2005. Eur Cytokine Netw. 16(2): 104-116. (Flow Cytometry – Baboon, Chimpanzee, Cynomolgus, Rhesus)

Tonbo Biosciences tests all antibodies by flow cytometry. Citations are provided as a resource for additional applications that have not been validated by Tonbo Biosciences. Please choose the appropriate format for each application and consult Materials and Methods sections for additional details about the use of any product in these publications.

For Research Use Only.

Not for use in diagnostic or therapeutic procedures. Not for resale. Not for distribution without written consent. Tonbo Biosciences will not be held responsible for patent infringement or other violations that may occur with the use of our products. Tonbo Biosciences, Tonbo Biosciences Logo and all other trademarks are the property of Tonbo Biotechnologies Corporation. © 2013 Tonbo Biosciences.