

TECHNICAL DATA SHEET

FITC Anti-Mouse Ly-6G (1A8)

Catalog Number: 35-1276

PRODUCT INFORMATION

Contents: FITC Anti-Mouse Ly-6G (1A8)

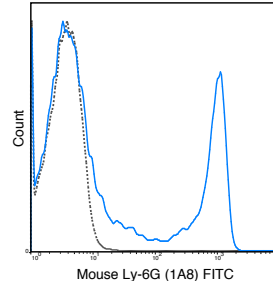
Isotype: Rat IgG2a, kappa

Concentration: 0.5 mg/mL

Clone: 1A8

Reactivity: Mouse

Formulation: 10 mM NaH₂PO₄, 150 mM NaCl, 0.09% NaN₃,
0.1% gelatin, pH7.2



C57Bl/6 bone marrow cells were stained with 0.25 ug FITC Anti-Mouse Ly-6G (35-1276) (solid line) or 0.25 ug FITC Rat IgG2a isotype control (dashed line).

DESCRIPTION

The 1A8 antibody binds to mouse Ly-6G, commonly known as Gr-1, a member of the Ly-6 superfamily of GPI-anchored cell surface proteins with roles in cell signaling and cell adhesion. Gr-1 is differentially expressed during development and maturation of cells in the myeloid lineage and its expression at varying stages and levels on monocytes, macrophages, granulocytes, and peripheral neutrophils. In the mouse, the 1A8 antibody is typically used in combination with the macrophage labeling antibody M1/70 (Anti-CD11b) for phenotypic analysis of monocytes, macrophages and granulocytes. Note: for identification of Ly-C, an alternative antibody, clone RB6-8C5, has been reported to cross-react with Ly-6C on cells expressing this antigen (Fleming et al. 1993. *J. Immunol.* 151:2399-2408 and Sasmono et al. 2007. *J. Leukoc. Biol.* 82: 111-123) and has been cited in the literature for identification of Ly-6G/Ly-6C.

PREPARATION & STORAGE

This monoclonal antibody was purified from tissue culture supernatant via affinity chromatography. The purified antibody was conjugated under optimal conditions, with unreacted dye removed from the preparation. It is recommended to store the product undiluted at 4°C, and protected from prolonged exposure to light. Do not freeze.

APPLICATION NOTES

This antibody preparation has been quality-tested for flow cytometry using mouse spleen cells, or an appropriate cell type (where indicated). The amount of antibody required for optimal staining of a cell sample should be determined empirically in your system.

REFERENCES

Kamaly N, Fredman G, Subramanian M, Gadge S, Pesic A, Cheung L, Fayad ZA, Langer R, Tabas I, and Cameron O. 2013. *Proc. Natl. Acad. Sci.* 110: 6506-6511. (flow cytometry). Stinn W, Buettner A, Weiler H, Friedrichs B, Luetjen S, van Overveld F, Meurrens K, Janssens K, Gebel S, Stabbert R, and Haussman H-J. 2013. *Toxicol. Sci.* 131: 596-611. (flow cytometry). Enoksson M, Moller-Westerberg C, Wicher G, Fallon PG, Forsberg-Nilsson K, Lunderius-Andersson C, and Nilsson G. 2013. *Blood.* 121: 530-536. (flow cytometry)

NOTE: Please choose the appropriate format for each application. Citations are provided as a convenience to you; please consult Materials and Methods sections for additional details about the use of any product in these publications.

For Research Use Only.

Not for use in diagnostic or therapeutic procedures. Not for resale. Not for distribution without written consent. Tonbo Biosciences will not be held responsible for patent infringement or other violations that may occur with the use of our products. Tonbo Biosciences, Tonbo Biosciences Logo and all other trademarks are the property of Tonbo Biotechnologies Corporation. © 2013 Tonbo Biosciences.