

TECHNICAL DATA SHEET

FITC Anti-Mouse TER-119 (TER-119)

Catalog Number: 35-5921

PRODUCT INFORMATION

Contents: FITC Anti-Mouse TER-119 (TER-119)

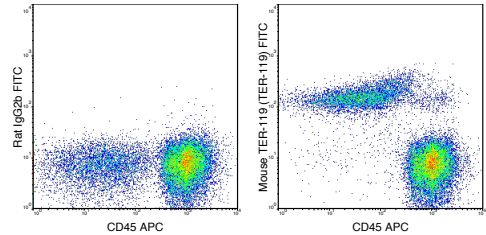
Isotype: Rat IgG2b, kappa

Concentration: 0.5 mg/mL

Clone: TER-119

Reactivity: Mouse

Formulation: 10 mM NaH₂PO₄, 150 mM NaCl, 0.09% NaN₃,
0.1% gelatin, pH7.2



C57Bl/6 bone marrow cells were stained with APC Anti-Mouse CD45 (20-0451) and 0.03 ug FITC Anti-Mouse TER-119 (35-5921) (right panel) or 0.03 ug FITC Rat IgG2b isotype control (left panel).

DESCRIPTION

The TER-119 antibody is named for the antigen to which it binds, a 52 kDa surface protein that is associated with glycoprotein-A. TER-119 is considered to be a lineage marker for later stages of erythroid cell development, as its expression begins at the pro-erythroblast stage. TER-119 antigen is not expressed at either BFU-E or CFU-E stages, i.e. prior to the pro-erythroblast stage.

PREPARATION & STORAGE

This monoclonal antibody was purified from tissue culture supernatant via affinity chromatography. The purified antibody was conjugated under optimal conditions, with unreacted dye removed from the preparation. It is recommended to store the product undiluted at 4°C, and protected from prolonged exposure to light. Do not freeze.

APPLICATION NOTES

This antibody preparation has been quality-tested for flow cytometry using mouse spleen cells, or an appropriate cell type (where indicated). The amount of antibody required for optimal staining of a cell sample should be determined empirically in your system.

REFERENCES

Berent-Maoz B, Montecino-Rodriguez E, Signer RAJ, and Dorshkind K. 2012. *Blood*. 119: 5715-5721. (flow cytometry)Kil LP, de Bruijn MJW, van Nimwegen M, Corneth OBJ, van Hamburg JP, Dingjan GM, Thaiss F, Rimmelzwaan GF, Elewaut D, Delsing D, van Loo PF, and Hendriks RW. 2012. *Blood*. 119: 3744-3756. (in vitro depletion)Hardy CL, LeMasurier JS, Belz GT, Scalzo-Inguanti K, Yao J, Xiang SD, Kanellakis P, Bobik A, Strickland DH, Rolland JM, O'Hehir RE, and Plebanski M. 2012. 188: 1431-1441. (in vitro depletion)Osada M, Inoue O, Ding G, Shirai T, Ichise H, Hirayama K, Takano K, Yatomi Y, Hirashima M, Fujii H, Suzuki-Inoue S, and Ozaki Y. 2012. *J. Biol. Chem.* 287: 22241-22252. (immunofluorescence microscopy – paraffin embedded tissue)Maetens M, doumont G, De Clercq S, Francoz S, Froment P, Bellefroid E, Klingmuller U, Lozano G, and Marine J-C. 2007. *Blood*. 109: 2630-2633. (immunofluorescence microscopy – OCT embedded frozen tissue)Kina T, Ikuta K, Takayama E, Wada K, Majumdar AS, Weissman IL, and Katsura Y. 2000. *Br. J. Haematol.* 109(2): 280-287. (immunoprecipitation, western blot)