

TECHNICAL DATA SHEET

PE Anti-Human CD28 (CD28.2)

Catalog Number: 50-0289

PRODUCT INFORMATION

Contents: PE Anti-Human CD28 (CD28.2)

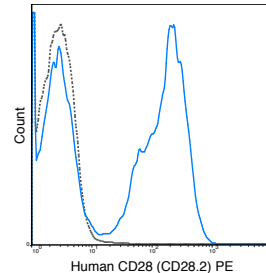
Isotype: Mouse IgG1, kappa

Concentration: 5 uL (0.25 ug)/test

Clone: CD28.2

Reactivity: Human

Formulation: 10 mM NaH₂PO₄, 150 mM NaCl, 0.09% NaN₃,
0.1% gelatin, pH7.2



Human peripheral blood lymphocytes were stained with 5 uL (0.25 ug) PE Anti-Human CD28 (50-0289) (solid line) or 0.25 ug PE Mouse IgG1 isotype control.

DESCRIPTION

The CD28.2 antibody reacts with human CD28, a 44 kDa type I surface glycoprotein which acts as a co-stimulatory receptor in support of the T cell receptor (TCR). CD28 exists as a homodimer with specificity for two known ligands, known as B7-1 (CD80) and B7-2 (CD86), which are expressed on activated B cells and antigen-presenting cells. These ligands trigger CD28 signaling in concert with TCR activation to drive T cell proliferation, induce high-level expression of IL-2, impart resistance to apoptosis, and enhance T cell cytotoxicity. The interaction / co-stimulatory signaling between the B7 ligands and CD28 provides crucial communication between T cells and B cells or APCs to coordinate the adaptive immune response. Other members of the CD28 family of receptors include CTLA-4 (CD152), PD-1 (CD279), ICOS and BTLA. The CD28.2 antibody may be used as a phenotypic marker for human CD28, expressed on all CD4+ T cells and CD8+ T cells, and is widely used as a reagent for activation of the CD28 receptor in vitro and in vivo. This antibody is also reported to be cross-reactive with several non-human species, including Baboon, Chimpanzee, Cynomolgus, and Rhesus.

PREPARATION & STORAGE

This monoclonal antibody was purified from tissue culture supernatant via affinity chromatography. The purified antibody was conjugated under optimal conditions, with unreacted dye removed from the preparation. It is recommended to store the product undiluted at 4°C, and protected from prolonged exposure to light. Do not freeze.

APPLICATION NOTES

This antibody preparation has been pre-titrated and quality-tested for flow cytometry using an appropriate cell type. The antibody has been diluted for use at 5 uL per test, defined as the amount of antibody that will stain a cell sample in a final volume of approximately 100 uL. The number of cells within a sample should be determined empirically, but typically ranges between 1x10⁵ to 1x10⁸ cells.

REFERENCES

Griffin GK, Newton G, Tarrío ML, Bu D-X, Maganto-García E, Azcutia V, Alcaide P, Grabie N, Luscinskas FW, Croce KJ, and Lichtman AH. 2012. *J. Immunol.* 188: 6287-6299. (in vitro activation) Cocchi F, DeVico AL, Lu W, Popovic M, Latiinovic O, Sajadi MM, Redfield RR, Lafferty MK, Galli M, Garzino-Demo A, and Gallo RC. 2012. *Proc. Natl. Acad. Sci.* 109: 5411-5416. (in vitro activation) Okoye AA, Rohankhedkar M, Abana C, Pattenn A, Reyes M, Pexton C, Lum R, Sylwester A, Planer SL, Legasse A, Park BS, Piatak M, Lifson JD, Axthelm MK and Picker LJ. 2012. *J. Exp. Med.* 209: 641-651. (flow cytometry) Vanderford TH, Slichter C, Rogers KA, Lawson BO, Obaede R, Else J, Villinger F, Bosinger SE, and Silvestri G. 2012. *Blood.* 119: 5750-5757. (flow cytometry – Sooty Mangabey) Ansari AA, Reimann KA, Mayne AE, Takahashi Y, Stephenson ST, Wang R, Wang X, Li J, Price AA, Little DM, Zaidi M, Lyles R, and Villinger F. 2011. *J. Immunol.* 186: 1044-1059. (flow cytometry – Rhesus macaque) Soto PC, Stein LL, Hurtado-Ziola N, Hedrick SA, and Varki A. 2010. *J. Immunol.* 184: 4185-4195. (in vitro activation – Chimpanzee) Di Carlo E, D'Antuono T, Pompa P, Giuliani R, Rosini S, Stuppia L, Musiani P, and Sorrentino C. 2009. *Clin. Cancer Res.* 15: 2979-2987. (immunohistochemistry – frozen tissue) Berg M and Zavazava N. 2008. *J. Leukoc. Biol.* 83: 852-863. (immunoprecipitation) Fos C, Salles A, Lang V, Carrette F, Audebert S, Pastor S, Ghiotto M, Olive D, Bismuth G, and Nunes JA. 2008. *J. Immunol.* 181: 1969-1977. (immunoprecipitation, flow cytometry)

NOTE: Please choose the appropriate format for each application. Citations are provided as a convenience to you; please consult Materials and Methods sections for additional details about the use of any product in these publications.

For Research Use Only.

Not for use in diagnostic or therapeutic procedures. Not for resale. Not for distribution without written consent. Tonbo Biosciences will not be held responsible for patent infringement or other violations that may occur with the use of our products. Tonbo Biosciences, Tonbo Biosciences Logo and all other trademarks are the property of Tonbo Biotechnologies Corporation. © 2013 Tonbo Biosciences.