

## TECHNICAL DATA SHEET

# PE Anti-Mouse CD279 (PD-1) (RMP1-30)

Catalog Number: 50-9981

## PRODUCT INFORMATION

**Contents:** PE Anti-Mouse CD279 (PD-1) (RMP1-30)

**Isotype:** Rat IgG2b, kappa

**Concentration:** 0.2 mg/mL

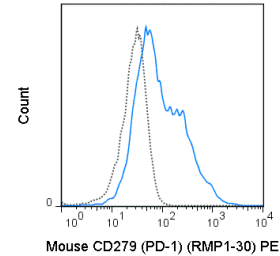
**Clone:** RMP1-30

**Reactivity:** Mouse

**Use By:** 12 months from date of receipt

**Storage Conditions:** 2-8°C protected from light

**Formulation:** 10 mM NaH<sub>2</sub>PO<sub>4</sub>, 150 mM NaCl, 0.09% NaN<sub>3</sub>,  
0.1% gelatin, pH7.2



C57Bl/6 splenocytes were stimulated with ConA and then stained with 0.5 ug PE Anti-Mouse CD279 (PD-1) (50-9981) (solid line) or 0.5 ug PE Rat IgG2b isotype control (dashed line).

## DESCRIPTION

The RMP1-30 antibody is specific for mouse CD279, also known as programmed death-1 (PD-1), a 55 kDa glycoprotein member of the Ig superfamily of molecules. PD-1 exists in a monomeric form that is expressed by CD4<sup>+</sup> CD8<sup>-</sup> thymocytes, where it participates in the processes of clonal selection, elimination of autoreactive lymphocytes, and development of tolerance. PD-1 expression is also inducible upon activation of mature T cells, where it has been proposed to interact with the co-stimulatory receptor CD80 to limit T cell activation. Two ligands for PD-1, known as PD-L1 (B7-H1) and PD-L2 (B7-DC) are differentially expressed on T and B cells, monocytes, macrophages, NK cells or dendritic cells.

## PREPARATION & STORAGE

This monoclonal antibody was purified from tissue culture supernatant via affinity chromatography. The purified antibody was conjugated under optimal conditions, with unreacted dye removed from the preparation. It is recommended to store the product undiluted at 4°C, and protected from prolonged exposure to light. Do not freeze.

## APPLICATION NOTES

This antibody preparation has been quality-tested for flow cytometry using mouse spleen cells, or an appropriate cell type (where indicated). Please refer to the figure legend for the optimal concentration used to stain the tissue shown. We recommend titrating the antibody under your specific conditions to determine the optimal concentration of antibody needed in your experimental system.

## REFERENCES

Ishida Y, Agata Y, Shibahara K, Honjo T. 1992. EMBO J. Nov 11(11):3887-3895. Carreno BM, Collins M. 2002. Annu Rev Immunol. 20:29-53. Matsumoto K, Inoue H, Nakano T, Tsuda M, Yoshiura Y, Fukuyama S, Tsushima F, Hoshino T, Aizawa H, Akiba H, Pardoll D, Hara N, Yagita H, Azuma M, Nakanishi Y. 2004. J Immunol. Feb 15;172(4):2530-2541.

Tonbo Biosciences tests all antibodies by flow cytometry. Citations are provided as a resource for additional applications that have not been validated by Tonbo Biosciences. Please choose the appropriate format for each application and consult Materials and Methods sections for additional details about the use of any product in these publications.

For Research Use Only.

Not for use in diagnostic or therapeutic procedures. Not for resale. Not for distribution without written consent. Tonbo Biosciences will not be held responsible for patent infringement or other violations that may occur with the use of our products. Tonbo Biosciences, Tonbo Biosciences Logo and all other trademarks are the property of Tonbo Biotechnologies Corporation. © 2013 Tonbo Biosciences.